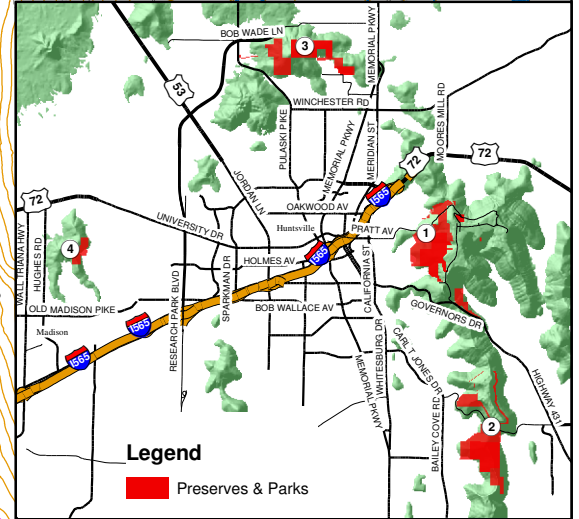


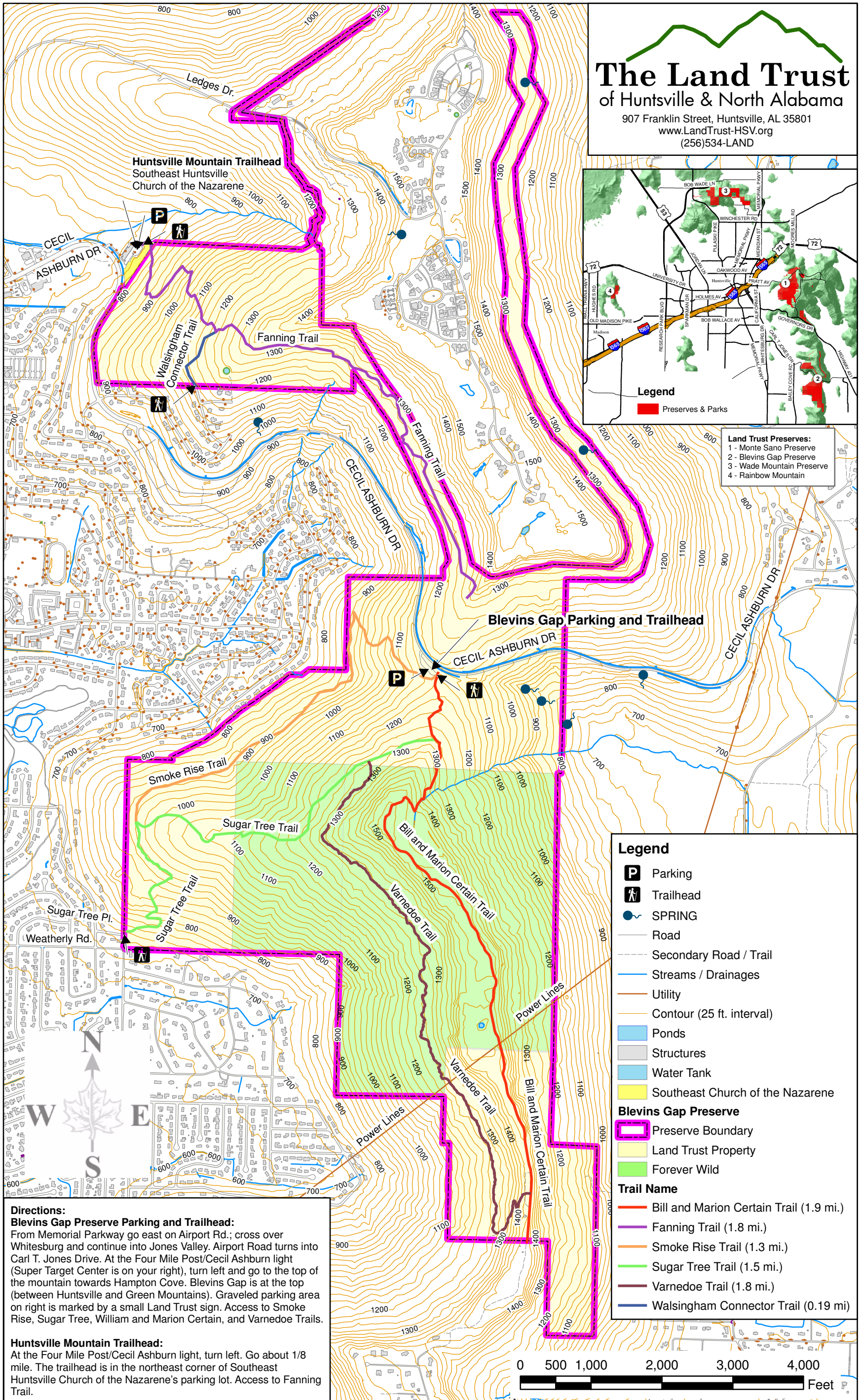
# Blevins Gap Preserve

## The Land Trust of Huntsville & North Alabama

907 Franklin Street, Huntsville, AL 35801  
 www.LandTrust-HSV.org  
 (256)534-LAND



**Land Trust Preserves:**  
 1 - Monte Sano Preserve  
 2 - Blevins Gap Preserve  
 3 - Wade Mountain Preserve  
 4 - Rainbow Mountain



**Legend**

- Parking
- Trailhead
- SPRING
- Road
- Secondary Road / Trail
- Streams / Drainages
- Utility
- Contour (25 ft. interval)
- Ponds
- Structures
- Water Tank
- Southeast Church of the Nazarene

**Blevins Gap Preserve**

- Preserve Boundary
- Land Trust Property
- Forever Wild

**Trail Name**

- Bill and Marion Certain Trail (1.9 mi.)
- Fanning Trail (1.8 mi.)
- Smoke Rise Trail (1.3 mi.)
- Sugar Tree Trail (1.5 mi.)
- Varnedoe Trail (1.8 mi.)
- Walsingham Connector Trail (0.19 mi)

**Directions:**  
**Blevins Gap Preserve Parking and Trailhead:**  
 From Memorial Parkway go east on Airport Rd.; cross over Whitesburg and continue into Jones Valley. Airport Road turns into Carl T. Jones Drive. At the Four Mile Post/Cecil Ashburn light (Super Target Center is on your right), turn left and go to the top of the mountain towards Hampton Cove. Blevins Gap is at the top (between Huntsville and Green Mountains). Graveled parking area on right is marked by a small Land Trust sign. Access to Smoke Rise, Sugar Tree, William and Marion Certain, and Varnedoe Trails.

**Huntsville Mountain Trailhead:**  
 At the Four Mile Post/Cecil Ashburn light, turn left. Go about 1/8 mile. The trailhead is in the northeast corner of Southeast Huntsville Church of the Nazarene's parking lot. Access to Fanning Trail.

